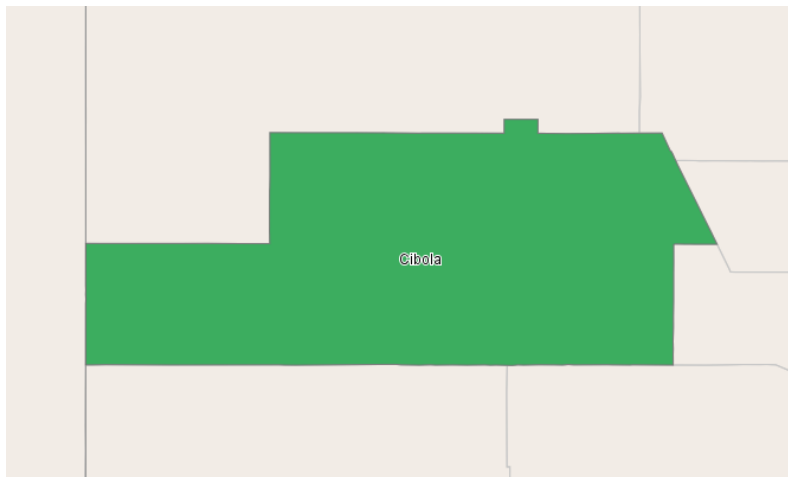


Purdue University

Rank Clusters Report

Cibola, NM

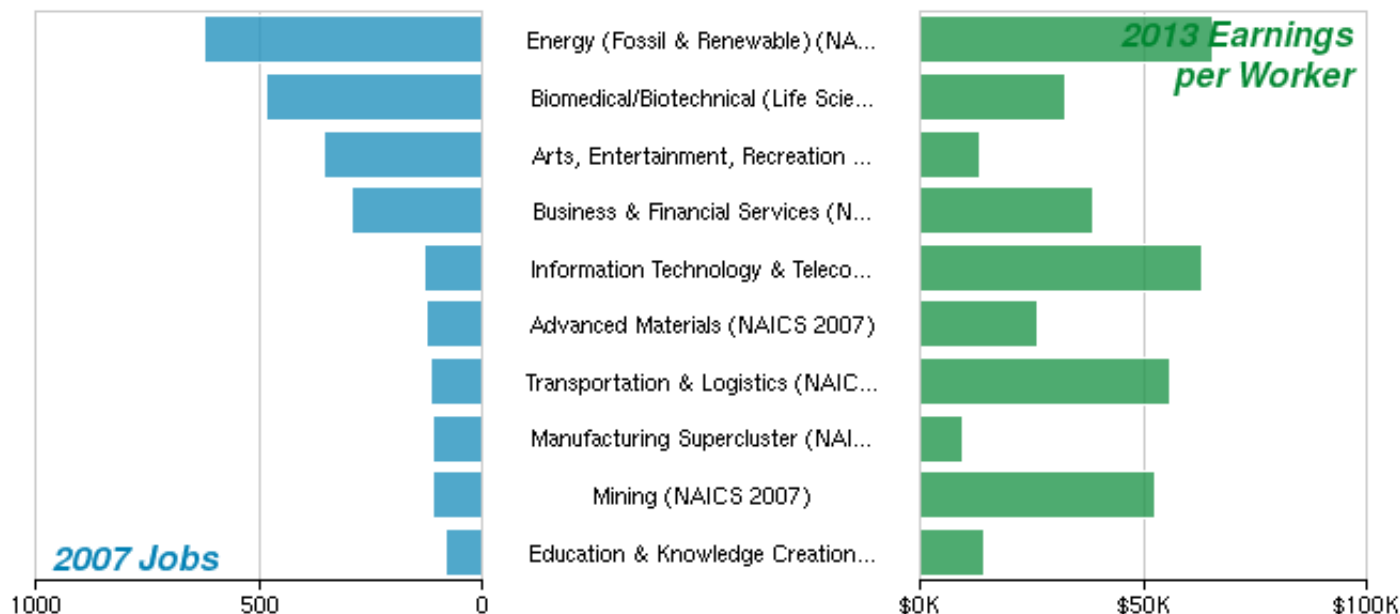


Region Info - Cibola, NM

Cibola County in New Mexico

County Areas	Cibola, NM (35006)
--------------	--------------------

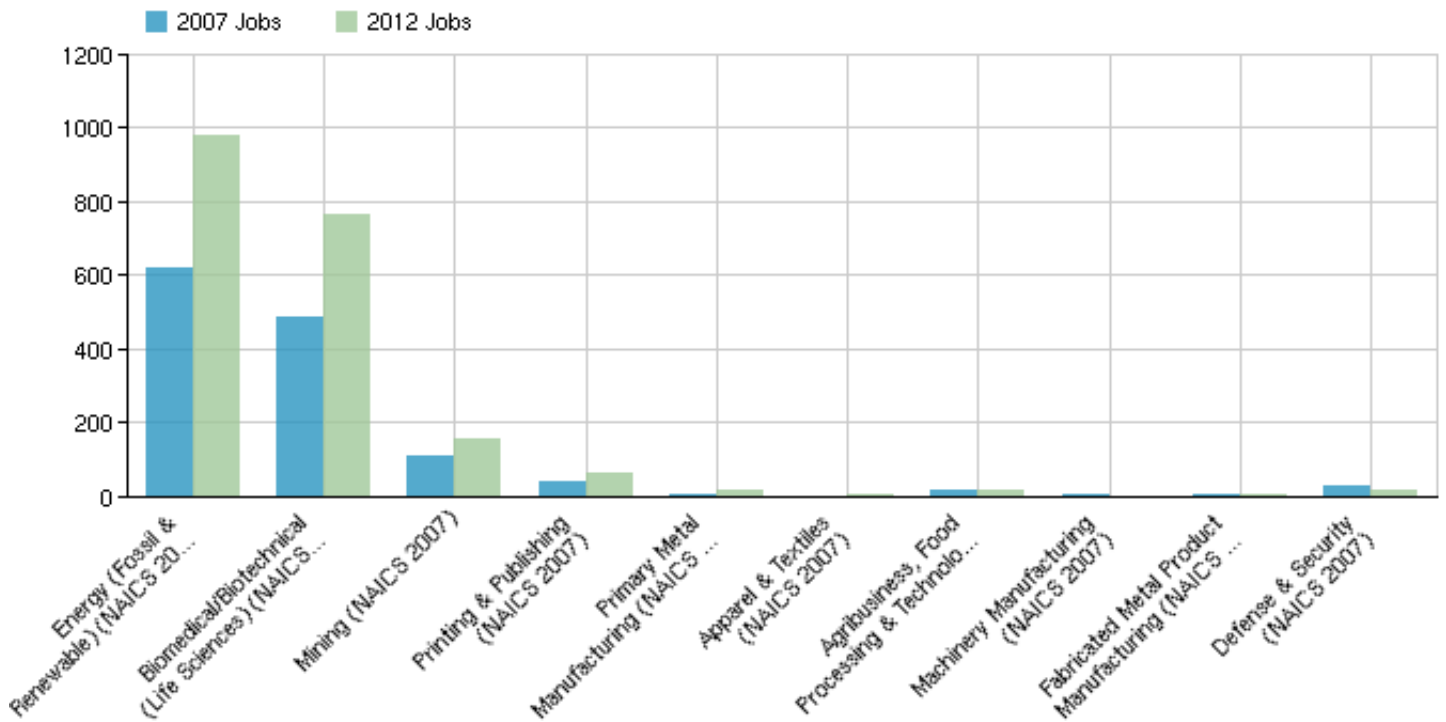
Ranked By: 2007 Jobs



Cluster Name	2007 Jobs	2013 EPW
Energy (Fossil & Renewable) (NAICS 2007)	620	\$65,721
Biomedical/Biotechnical (Life Sciences) (NAICS 2007)	485	\$32,452
Arts, Entertainment, Recreation & Visitor Industries (NAICS 2007)	356	\$13,247
Business & Financial Services (NAICS 2007)	294	\$38,747
Information Technology & Telecommunications (NAICS 2007)	129	\$63,241
Advanced Materials (NAICS 2007)	123	\$26,374
Transportation & Logistics (NAICS 2007)	115	\$55,911
Manufacturing Supercluster (NAICS 2007)	110	\$9,765
Mining (NAICS 2007)	109	\$52,789
Education & Knowledge Creation (NAICS 2007)	81	\$14,479
Forest & Wood Products (NAICS 2007)	74	\$60,831
Computer & Electronic Product Manufacturing (NAICS 2007)	73	\$0
Chemicals & Chemical Based Products (NAICS 2007)	64	\$22,981
Printing & Publishing (NAICS 2007)	41	\$41,065
Glass & Ceramics (NAICS 2007)	40	\$10,704
Defense & Security (NAICS 2007)	27	\$46,917
Agribusiness, Food Processing & Technology (NAICS 2007)	20	\$18,894
Transportation Equipment Manufacturing (NAICS 2007)	20	\$56,778
Fabricated Metal Product Manufacturing (NAICS 2007)	<10	--
Primary Metal Manufacturing (NAICS 2007)	<10	--
Machinery Manufacturing (NAICS 2007)	<10	--
Apparel & Textiles (NAICS 2007)	<10	--

Source: EMSI Complete Employment - 2013.2

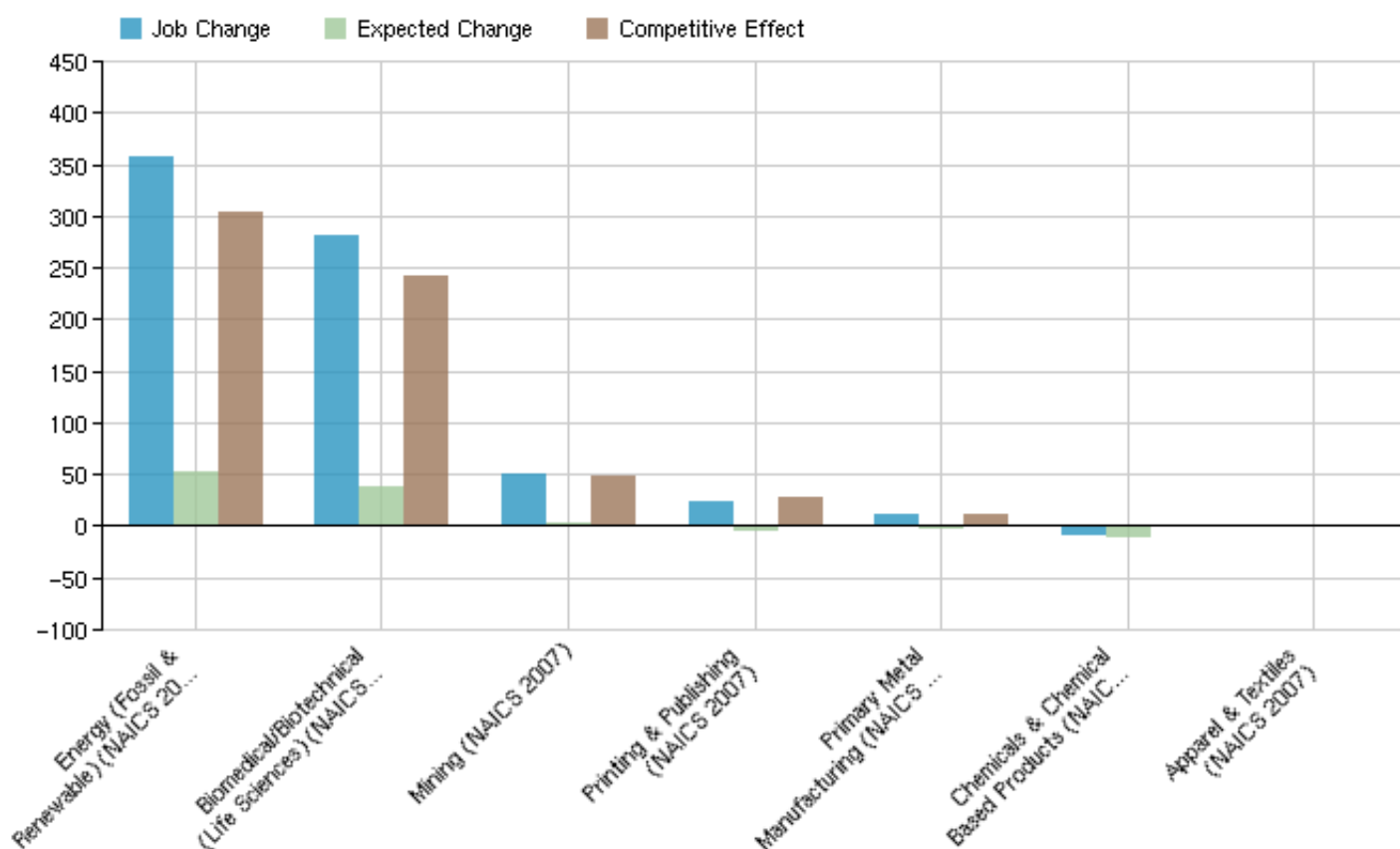
Ranked By: 2007-2012 Growth



Cluster Name	2007 Jobs	2012 Jobs	Change	% Change
Energy (Fossil & Renewable) (NAICS 2007)	620	977	357	58%
Biomedical/Biotechnical (Life Sciences) (NAICS 2007)	485	765	280	58%
Mining (NAICS 2007)	109	159	50	46%
Printing & Publishing (NAICS 2007)	41	65	24	59%
Primary Metal Manufacturing (NAICS 2007)	<10	16	--	--
Apparel & Textiles (NAICS 2007)	<10	<10	--	--
Agribusiness, Food Processing & Technology (NAICS 2007)	20	19	-1	-5%
Machinery Manufacturing (NAICS 2007)	<10	0	--	--
Fabricated Metal Product Manufacturing (NAICS 2007)	<10	<10	--	--
Defense & Security (NAICS 2007)	27	20	-7	-26%
Business & Financial Services (NAICS 2007)	294	287	-7	-2%
Chemicals & Chemical Based Products (NAICS 2007)	64	57	-7	-11%
Glass & Ceramics (NAICS 2007)	40	29	-11	-28%
Transportation Equipment Manufacturing (NAICS 2007)	20	<10	--	--
Education & Knowledge Creation (NAICS 2007)	81	54	-27	-33%
Transportation & Logistics (NAICS 2007)	115	87	-28	-24%
Forest & Wood Products (NAICS 2007)	74	41	-33	-45%
Arts, Entertainment, Recreation & Visitor Industries (NAICS 2007)	356	296	-60	-17%
Advanced Materials (NAICS 2007)	123	51	-72	-59%
Computer & Electronic Product Manufacturing (NAICS 2007)	73	0	-73	-100%
Manufacturing Supercluster (NAICS 2007)	110	22	-88	-80%
Information Technology & Telecommunications (NAICS 2007)	129	15	-114	-88%

Source: EMSI Complete Employment - 2013.2

Ranked By: Regional Competitiveness (Shift Share)

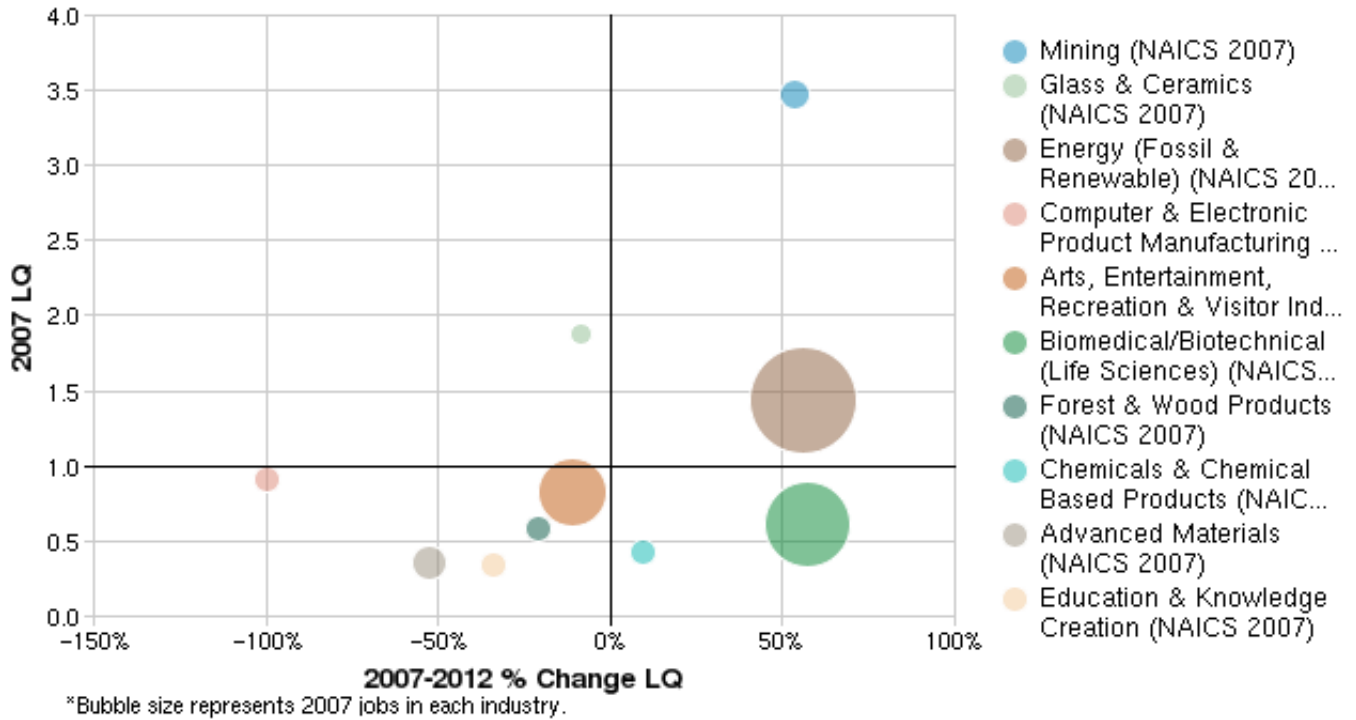


Cluster Name	Job Change	Ind Mix Effect	Nat Growth Effect	Expected Change	Competitive Effect
Energy (Fossil & Renewable) (NAICS 2007)	356	54	-2	52	304
Biomedical/Biotechnical (Life Sciences) (NAICS 2007)	281	40	-2	38	242
Mining (NAICS 2007)	50	2	0	2	48
Printing & Publishing (NAICS 2007)	24	-3	0	-3	27
Primary Metal Manufacturing (NAICS 2007)	10	-1	0	-1	11
Chemicals & Chemical Based Products (NAICS 2007)	-7	-9	0	-9	2
Apparel & Textiles (NAICS 2007)	1	0	0	0	1
Agribusiness, Food Processing & Technology (NAICS 2007)	-1	0	0	0	-1
Fabricated Metal Product Manufacturing (NAICS 2007)	-4	-1	0	-1	-3
Machinery Manufacturing (NAICS 2007)	-4	0	0	0	-4
Glass & Ceramics (NAICS 2007)	-11	-6	0	-6	-5
Defense & Security (NAICS 2007)	-6	1	0	1	-8
Forest & Wood Products (NAICS 2007)	-33	-19	0	-19	-14
Transportation Equipment Manufacturing (NAICS 2007)	-18	-3	0	-3	-15
Transportation & Logistics (NAICS 2007)	-28	-4	0	-4	-24
Education & Knowledge Creation (NAICS 2007)	-26	9	0	9	-35
Business & Financial Services (NAICS 2007)	-7	30	-1	29	-36
Advanced Materials (NAICS 2007)	-71	-10	0	-10	-62
Computer & Electronic Product Manufacturing (NAICS 2007)	-73	-9	0	-9	-63
Arts, Entertainment, Recreation & Visitor Industries (NAICS 2007)	-60	5	-1	4	-64
Manufacturing Supercluster (NAICS 2007)	-88	-13	0	-13	-75
Information Technology & Telecommunications (NAICS 2007)	-114	0	0	0	-113

Cluster Name	Job Change	Ind Mix Effect	Nat Growth Effect	Expected Change	Competitive Effect
2007)					

Source: EMSI Complete Employment - 2013.2

Ranked By: 2007 Location Quotient



Cluster Name	2007 Jobs	2007 LQ	2012 LQ	Percent Change LQ
Mining (NAICS 2007)	109	3.48	5.35	54%
Glass & Ceramics (NAICS 2007)	40	1.88	1.72	-9%
Energy (Fossil & Renewable) (NAICS 2007)	620	1.44	2.25	56%
Computer & Electronic Product Manufacturing (NAICS 2007)	73	0.91	0.00	-100%
Arts, Entertainment, Recreation & Visitor Industries (NAICS 2007)	356	0.82	0.73	-11%
Biomedical/Biotechnical (Life Sciences) (NAICS 2007)	485	0.61	0.96	57%
Forest & Wood Products (NAICS 2007)	74	0.58	0.46	-21%
Chemicals & Chemical Based Products (NAICS 2007)	64	0.43	0.47	9%
Advanced Materials (NAICS 2007)	123	0.36	0.17	-53%
Education & Knowledge Creation (NAICS 2007)	81	0.35	0.23	-34%
Transportation & Logistics (NAICS 2007)	115	0.33	0.28	-15%
Information Technology & Telecommunications (NAICS 2007)	129	0.33	0.04	-88%
Manufacturing Supercluster (NAICS 2007)	110	0.26	0.06	-77%
Business & Financial Services (NAICS 2007)	294	0.23	0.22	-4%
Printing & Publishing (NAICS 2007)	41	0.20	0.36	80%
Primary Metal Manufacturing (NAICS 2007)	<10	--	0.68	--
Transportation Equipment Manufacturing (NAICS 2007)	20	0.18	0.02	-89%
Agribusiness, Food Processing & Technology (NAICS 2007)	20	0.12	0.13	8%
Fabricated Metal Product Manufacturing (NAICS 2007)	<10	--	0.05	--
Defense & Security (NAICS 2007)	27	0.08	0.07	-13%
Machinery Manufacturing (NAICS 2007)	<10	--	0.00	--
Apparel & Textiles (NAICS 2007)	<10	--	0.04	--

Cluster Name	2007 Jobs	2007 LQ	2012 LQ	Percent Change LQ
--------------	-----------	---------	---------	-------------------

Source: EMSI Complete Employment - 2013.2

Data Sources and Calculations

Industry Data

In order to capture a complete picture of industry employment, EMSI basically combines covered employment data from Quarterly Census of Employment and Wages (QCEW) produced by the Department of Labor with total employment data in Regional Economic Information System (REIS) published by the Bureau of Economic Analysis (BEA), augmented with County Business Patterns (CBP) and Nonemployer Statistics (NES) published by the U.S. Census Bureau. Projections are based on the latest available EMSI industry data, 15-year past local trends in each industry, growth rates in statewide and (where available) sub-state area industry projections published by individual state agencies, and (in part) growth rates in national projections from the Bureau of Labor Statistics.

Shift Share

Shift share is a standard regional analysis method that attempts to determine how much of regional job growth can be attributed to national trends and how much is due to unique regional factors.

Location Quotient

Location quotient (LQ) is a way of quantifying how concentrated a particular industry, cluster, occupation, or demographic group is in a region as compared to the nation. It can reveal what makes a particular region unique in comparison to the national average.