

Purdue University

Rank Clusters Report

San Juan, NM

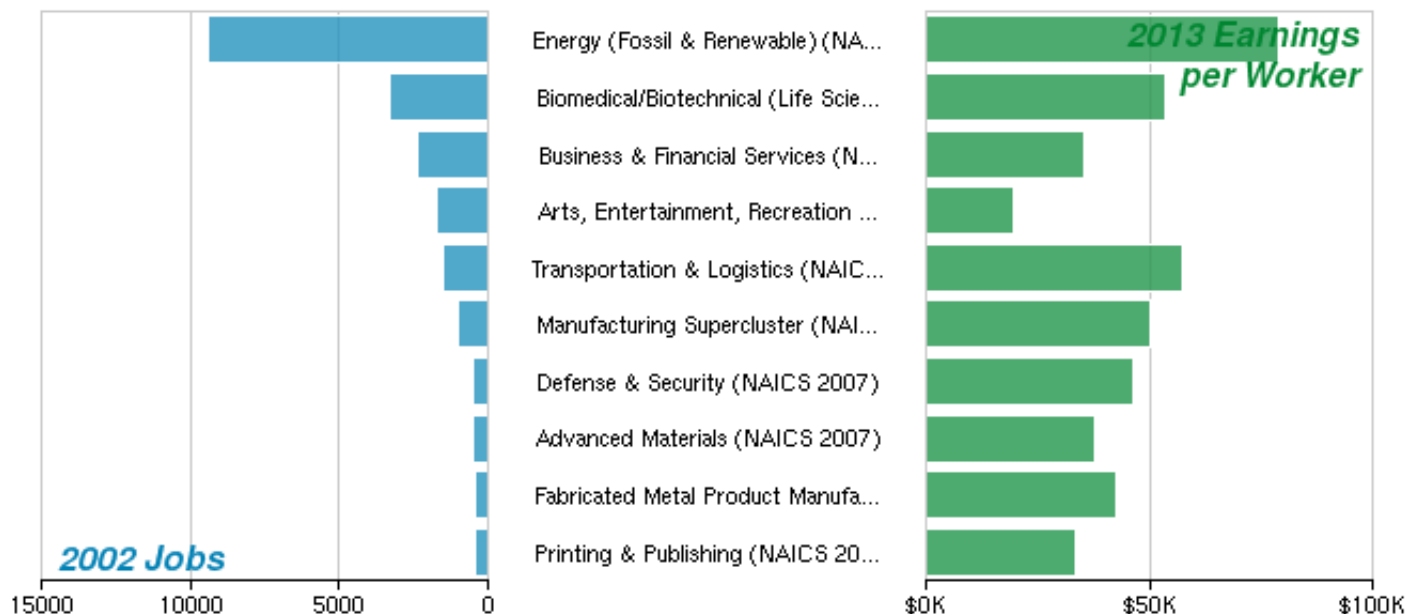


Region Info - San Juan, NM

San Juan County, NM

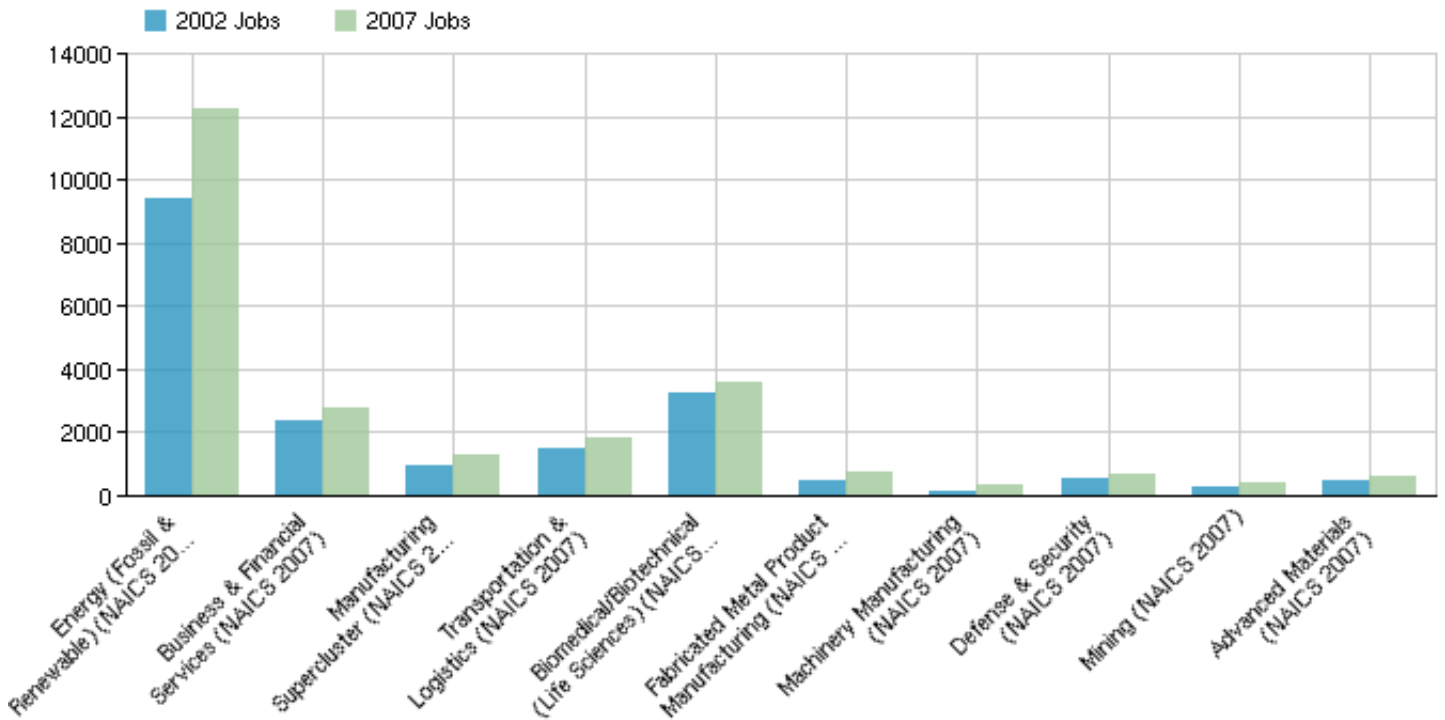
County Areas	San Juan, NM (35045)
--------------	----------------------

Ranked By: 2002 Jobs



Cluster Name	2002 Jobs	2013 EPW
Energy (Fossil & Renewable) (NAICS 2007)	9,396	\$79,099
Biomedical/Biotechnical (Life Sciences) (NAICS 2007)	3,280	\$53,489
Business & Financial Services (NAICS 2007)	2,372	\$35,519
Arts, Entertainment, Recreation & Visitor Industries (NAICS 2007)	1,723	\$19,518
Transportation & Logistics (NAICS 2007)	1,519	\$57,288
Manufacturing Supercluster (NAICS 2007)	981	\$50,202
Defense & Security (NAICS 2007)	509	\$46,549
Advanced Materials (NAICS 2007)	501	\$37,597
Fabricated Metal Product Manufacturing (NAICS 2007)	460	\$42,667
Printing & Publishing (NAICS 2007)	452	\$33,599
Information Technology & Telecommunications (NAICS 2007)	407	\$60,311
Education & Knowledge Creation (NAICS 2007)	406	\$11,588
Agribusiness, Food Processing & Technology (NAICS 2007)	307	\$37,034
Mining (NAICS 2007)	289	\$77,182
Transportation Equipment Manufacturing (NAICS 2007)	277	\$74,375
Chemicals & Chemical Based Products (NAICS 2007)	252	\$53,025
Apparel & Textiles (NAICS 2007)	198	\$17,719
Forest & Wood Products (NAICS 2007)	170	\$20,855
Machinery Manufacturing (NAICS 2007)	160	\$52,327
Glass & Ceramics (NAICS 2007)	60	\$12,576
Electrical Equipment, Appliance & Component Manufacturing (NAICS 2007)	42	\$80,207
Computer & Electronic Product Manufacturing (NAICS 2007)	23	\$80,401
Primary Metal Manufacturing (NAICS 2007)	19	\$55,348

Ranked By: 2002-2007 Growth

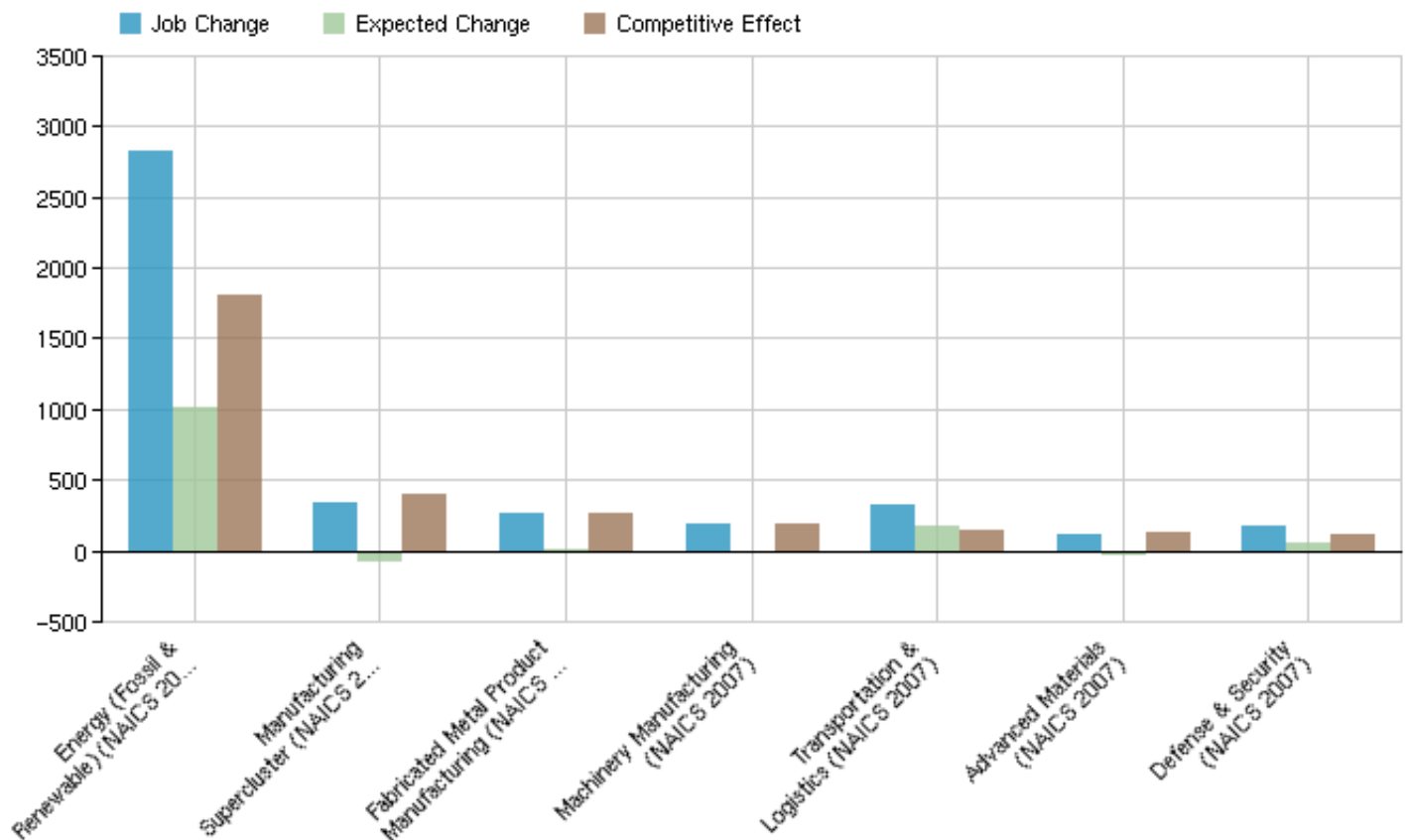


Cluster Name	2002 Jobs	2007 Jobs	Change	% Change
Energy (Fossil & Renewable) (NAICS 2007)	9,396	12,223	2,827	30%
Business & Financial Services (NAICS 2007)	2,372	2,797	425	18%
Manufacturing Supercluster (NAICS 2007)	981	1,316	335	34%
Transportation & Logistics (NAICS 2007)	1,519	1,842	323	21%
Biomedical/Biotechnical (Life Sciences) (NAICS 2007)	3,280	3,600	320	10%
Fabricated Metal Product Manufacturing (NAICS 2007)	460	731	271	59%
Machinery Manufacturing (NAICS 2007)	160	345	185	116%
Defense & Security (NAICS 2007)	509	685	176	35%
Mining (NAICS 2007)	289	416	127	44%
Advanced Materials (NAICS 2007)	501	613	112	22%
Information Technology & Telecommunications (NAICS 2007)	407	500	93	23%
Electrical Equipment, Appliance & Component Manufacturing (NAICS 2007)	42	129	87	207%
Apparel & Textiles (NAICS 2007)	198	221	23	12%
Forest & Wood Products (NAICS 2007)	170	183	13	8%
Computer & Electronic Product Manufacturing (NAICS 2007)	23	28	5	22%
Primary Metal Manufacturing (NAICS 2007)	19	12	-7	-37%
Chemicals & Chemical Based Products (NAICS 2007)	252	243	-9	-4%
Glass & Ceramics (NAICS 2007)	60	47	-13	-22%
Agribusiness, Food Processing & Technology (NAICS 2007)	307	282	-25	-8%
Arts, Entertainment, Recreation & Visitor Industries (NAICS 2007)	1,723	1,696	-27	-2%
Printing & Publishing (NAICS 2007)	452	346	-106	-23%
Education & Knowledge Creation (NAICS 2007)	406	293	-113	-28%
Transportation Equipment Manufacturing (NAICS 2007)	277	71	-206	-74%

Source: EMSI Complete Employment - 2013.2

Cluster Name	2002 Jobs	2007 Jobs	Change	% Change
--------------	-----------	-----------	--------	----------

Ranked By: Regional Competitiveness (Shift Share)

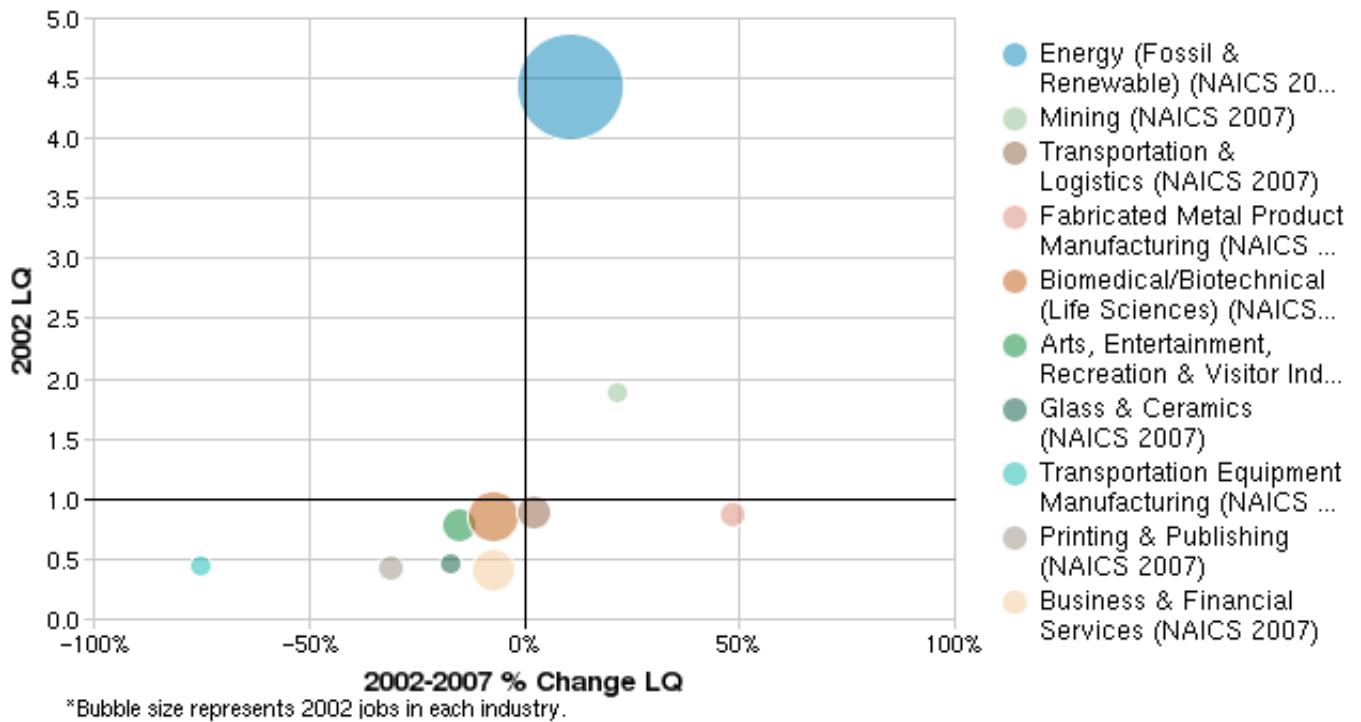


Cluster Name	Job Change	Ind Mix Effect	Nat Growth Effect	Expected Change	Competitive Effect
Energy (Fossil & Renewable) (NAICS 2007)	2,826	165	854	1,019	1,807
Manufacturing Supercluster (NAICS 2007)	335	-153	89	-64	399
Fabricated Metal Product Manufacturing (NAICS 2007)	271	-37	42	5	266
Machinery Manufacturing (NAICS 2007)	185	-18	15	-3	189
Transportation & Logistics (NAICS 2007)	322	39	138	177	145
Advanced Materials (NAICS 2007)	111	-68	46	-22	134
Defense & Security (NAICS 2007)	176	12	46	58	117
Information Technology & Telecommunications (NAICS 2007)	93	-45	37	-8	102
Mining (NAICS 2007)	127	8	26	34	93
Electrical Equipment, Appliance & Component Manufacturing (NAICS 2007)	87	-9	4	-5	92
Apparel & Textiles (NAICS 2007)	23	-46	18	-28	52
Forest & Wood Products (NAICS 2007)	13	-31	15	-16	29
Chemicals & Chemical Based Products (NAICS 2007)	-8	-41	23	-18	9
Computer & Electronic Product Manufacturing (NAICS 2007)	5	-5	2	-3	8
Primary Metal Manufacturing (NAICS 2007)	-7	-3	2	-1	-5
Glass & Ceramics (NAICS 2007)	-13	-12	5	-7	-7
Agribusiness, Food Processing & Technology (NAICS 2007)	-26	-30	28	-2	-24
Business & Financial Services (NAICS 2007)	425	249	216	465	-40
Biomedical/Biotechnical (Life Sciences) (NAICS 2007)	320	76	298	374	-54
Printing & Publishing (NAICS 2007)	-106	-14	41	27	-133
Arts, Entertainment, Recreation & Visitor Industries	-27	-9	157	148	-175

Cluster Name	Job Change	Ind Mix Effect	Nat Growth Effect	Expected Change	Competitive Effect
(NAICS 2007)					
Education & Knowledge Creation (NAICS 2007)	-113	28	37	65	-178
Transportation Equipment Manufacturing (NAICS 2007)	-206	-42	25	-17	-189

Source: EMSI Complete Employment - 2013.2

Ranked By: 2002 Location Quotient



Cluster Name	2002 Jobs	2002 LQ	2007 LQ	Percent Change LQ
Energy (Fossil & Renewable) (NAICS 2007)	9,396	4.43	4.91	11%
Mining (NAICS 2007)	289	1.88	2.29	22%
Transportation & Logistics (NAICS 2007)	1,519	0.90	0.92	2%
Fabricated Metal Product Manufacturing (NAICS 2007)	460	0.87	1.29	48%
Biomedical/Biotechnical (Life Sciences) (NAICS 2007)	3,280	0.85	0.79	-7%
Arts, Entertainment, Recreation & Visitor Industries (NAICS 2007)	1,723	0.79	0.67	-15%
Glass & Ceramics (NAICS 2007)	60	0.47	0.39	-17%
Transportation Equipment Manufacturing (NAICS 2007)	277	0.44	0.11	-75%
Printing & Publishing (NAICS 2007)	452	0.42	0.29	-31%
Business & Financial Services (NAICS 2007)	2,372	0.41	0.38	-7%
Manufacturing Supercluster (NAICS 2007)	981	0.40	0.54	35%
Machinery Manufacturing (NAICS 2007)	160	0.37	0.78	111%
Education & Knowledge Creation (NAICS 2007)	406	0.37	0.22	-41%
Agribusiness, Food Processing & Technology (NAICS 2007)	307	0.34	0.30	-12%
Defense & Security (NAICS 2007)	509	0.33	0.37	12%
Apparel & Textiles (NAICS 2007)	198	0.32	0.39	22%
Chemicals & Chemical Based Products (NAICS 2007)	252	0.28	0.28	0%
Advanced Materials (NAICS 2007)	501	0.25	0.31	24%
Electrical Equipment, Appliance & Component Manufacturing (NAICS 2007)	42	0.24	0.81	238%

Cluster Name	2002 Jobs	2002 LQ	2007 LQ	Percent Change LQ
Forest & Wood Products (NAICS 2007)	170	0.22	0.25	14%
Information Technology & Telecommunications (NAICS 2007)	407	0.19	0.22	16%
Primary Metal Manufacturing (NAICS 2007)	19	0.11	0.07	-36%
Computer & Electronic Product Manufacturing (NAICS 2007)	23	0.04	0.06	50%

Source: EMSI Complete Employment - 2013.2

Data Sources and Calculations

Industry Data

In order to capture a complete picture of industry employment, EMSI basically combines covered employment data from Quarterly Census of Employment and Wages (QCEW) produced by the Department of Labor with total employment data in Regional Economic Information System (REIS) published by the Bureau of Economic Analysis (BEA), augmented with County Business Patterns (CBP) and Nonemployer Statistics (NES) published by the U.S. Census Bureau. Projections are based on the latest available EMSI industry data, 15-year past local trends in each industry, growth rates in statewide and (where available) sub-state area industry projections published by individual state agencies, and (in part) growth rates in national projections from the Bureau of Labor Statistics.

Shift Share

Shift share is a standard regional analysis method that attempts to determine how much of regional job growth can be attributed to national trends and how much is due to unique regional factors.

Location Quotient

Location quotient (LQ) is a way of quantifying how concentrated a particular industry, cluster, occupation, or demographic group is in a region as compared to the nation. It can reveal what makes a particular region unique in comparison to the national average.