

Purdue University

Rank Clusters Report

San Juan, NM

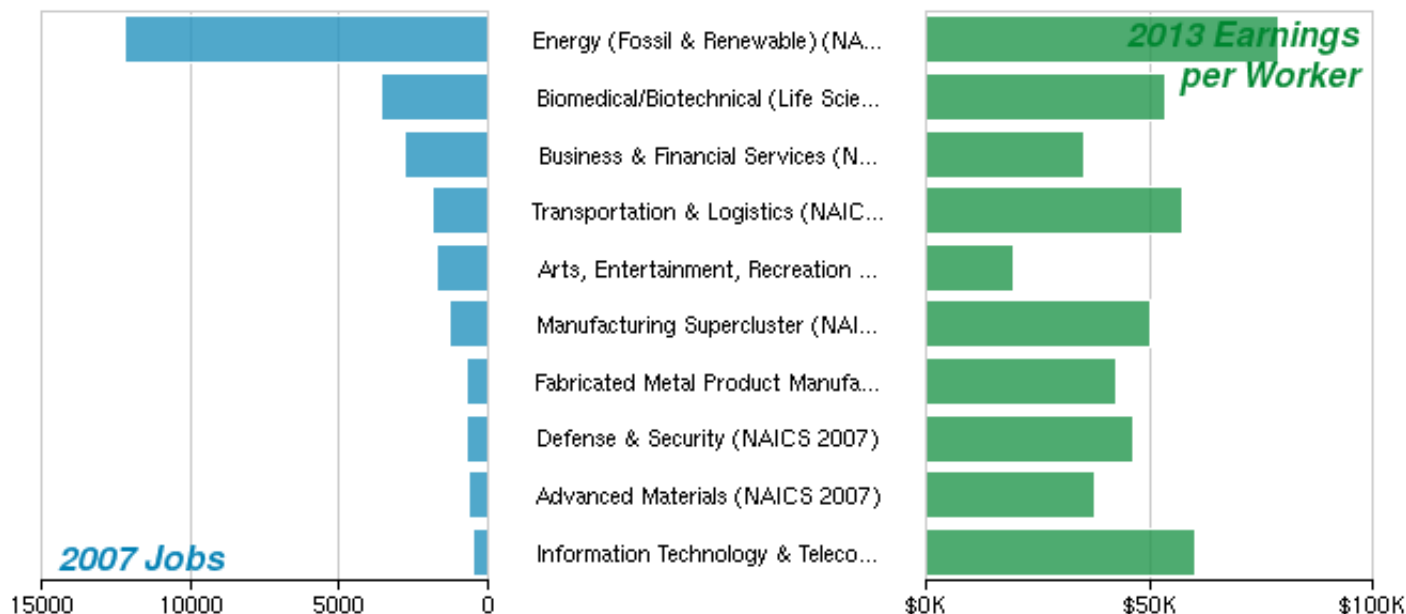


Region Info - San Juan, NM

San Juan County, NM

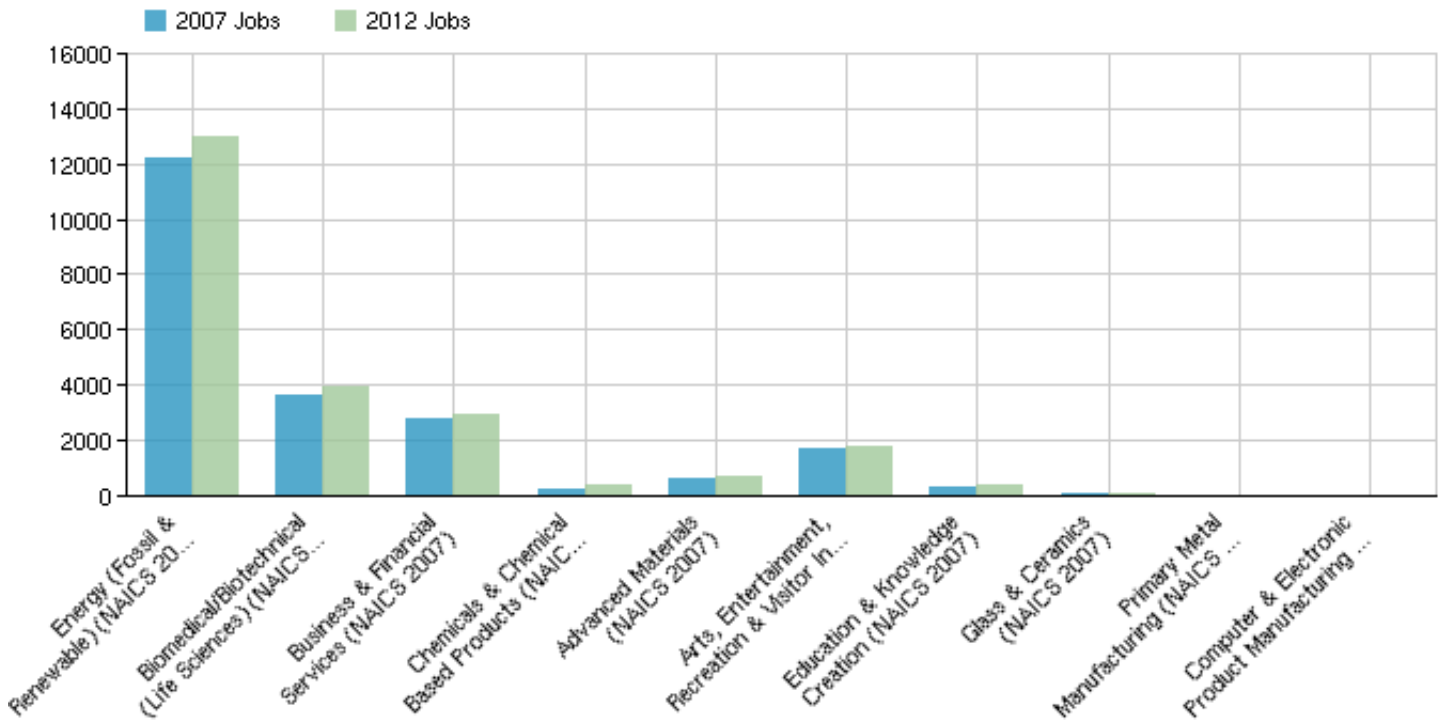
County Areas	San Juan, NM (35045)
--------------	----------------------

Ranked By: 2007 Jobs



Cluster Name	2007 Jobs	2013 EPW
Energy (Fossil & Renewable) (NAICS 2007)	12,223	\$79,099
Biomedical/Biotechnical (Life Sciences) (NAICS 2007)	3,600	\$53,489
Business & Financial Services (NAICS 2007)	2,797	\$35,519
Transportation & Logistics (NAICS 2007)	1,842	\$57,288
Arts, Entertainment, Recreation & Visitor Industries (NAICS 2007)	1,696	\$19,518
Manufacturing Supercluster (NAICS 2007)	1,316	\$50,202
Fabricated Metal Product Manufacturing (NAICS 2007)	731	\$42,667
Defense & Security (NAICS 2007)	685	\$46,549
Advanced Materials (NAICS 2007)	613	\$37,597
Information Technology & Telecommunications (NAICS 2007)	500	\$60,311
Mining (NAICS 2007)	416	\$77,182
Printing & Publishing (NAICS 2007)	346	\$33,599
Machinery Manufacturing (NAICS 2007)	345	\$52,327
Education & Knowledge Creation (NAICS 2007)	293	\$11,588
Agribusiness, Food Processing & Technology (NAICS 2007)	282	\$37,034
Chemicals & Chemical Based Products (NAICS 2007)	243	\$53,025
Apparel & Textiles (NAICS 2007)	221	\$17,719
Forest & Wood Products (NAICS 2007)	183	\$20,855
Electrical Equipment, Appliance & Component Manufacturing (NAICS 2007)	129	\$80,207
Transportation Equipment Manufacturing (NAICS 2007)	71	\$74,375
Glass & Ceramics (NAICS 2007)	47	\$12,576
Computer & Electronic Product Manufacturing (NAICS 2007)	28	\$80,401
Primary Metal Manufacturing (NAICS 2007)	12	\$55,348

Ranked By: 2007-2012 Growth

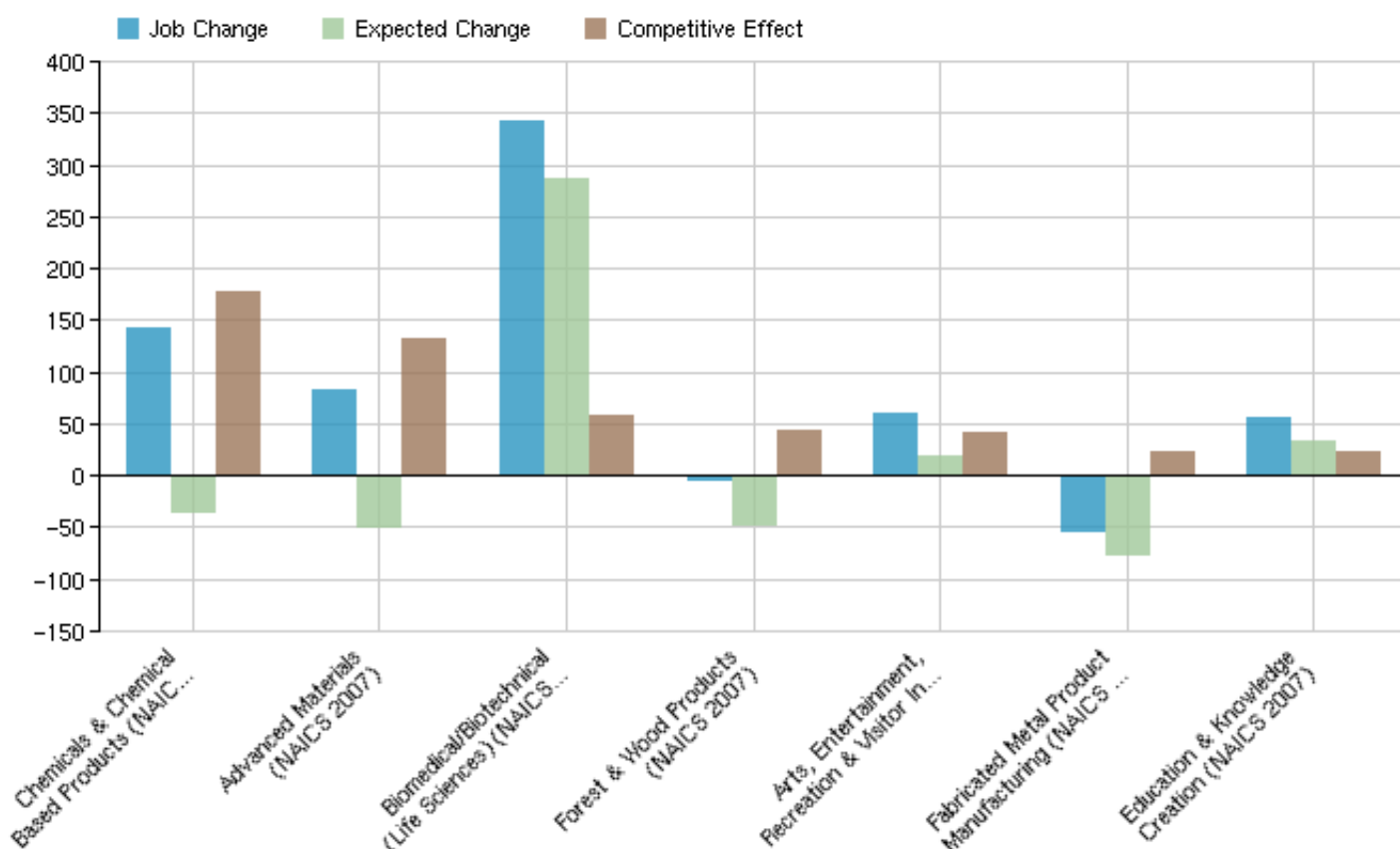


Cluster Name	2007 Jobs	2012 Jobs	Change	% Change
Energy (Fossil & Renewable) (NAICS 2007)	12,223	12,991	768	6%
Biomedical/Biotechnical (Life Sciences) (NAICS 2007)	3,600	3,943	343	10%
Business & Financial Services (NAICS 2007)	2,797	2,945	148	5%
Chemicals & Chemical Based Products (NAICS 2007)	243	386	143	59%
Advanced Materials (NAICS 2007)	613	696	83	14%
Arts, Entertainment, Recreation & Visitor Industries (NAICS 2007)	1,696	1,756	60	4%
Education & Knowledge Creation (NAICS 2007)	293	348	55	19%
Glass & Ceramics (NAICS 2007)	47	61	14	30%
Primary Metal Manufacturing (NAICS 2007)	12	19	7	58%
Computer & Electronic Product Manufacturing (NAICS 2007)	28	23	-5	-18%
Forest & Wood Products (NAICS 2007)	183	178	-5	-3%
Printing & Publishing (NAICS 2007)	346	330	-16	-5%
Transportation Equipment Manufacturing (NAICS 2007)	71	49	-22	-31%
Machinery Manufacturing (NAICS 2007)	345	317	-28	-8%
Mining (NAICS 2007)	416	382	-34	-8%
Electrical Equipment, Appliance & Component Manufacturing (NAICS 2007)	129	96	-33	-26%
Fabricated Metal Product Manufacturing (NAICS 2007)	731	678	-53	-7%
Agribusiness, Food Processing & Technology (NAICS 2007)	282	222	-60	-21%
Apparel & Textiles (NAICS 2007)	221	159	-62	-28%
Information Technology & Telecommunications (NAICS 2007)	500	430	-70	-14%
Defense & Security (NAICS 2007)	685	580	-105	-15%
Manufacturing Supercluster (NAICS 2007)	1,316	1,182	-134	-10%
Transportation & Logistics (NAICS 2007)	1,842	1,605	-237	-13%

Source: EMSI Complete Employment - 2013.2

Cluster Name	2007 Jobs	2012 Jobs	Change	% Change
--------------	-----------	-----------	--------	----------

Ranked By: Regional Competitiveness (Shift Share)

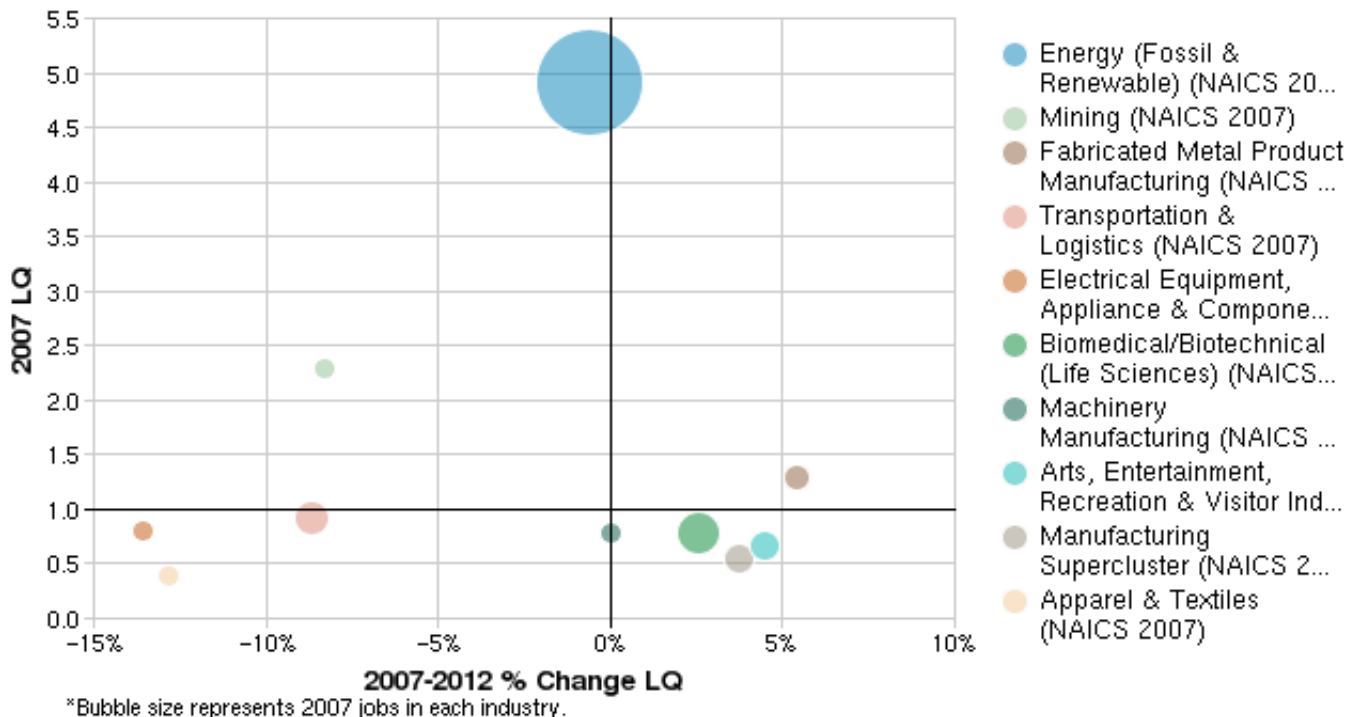


Cluster Name	Job Change	Ind Mix Effect	Nat Growth Effect	Expected Change	Competitive Effect
Chemicals & Chemical Based Products (NAICS 2007)	143	-34	-1	-35	178
Advanced Materials (NAICS 2007)	83	-48	-2	-50	133
Biomedical/Biotechnical (Life Sciences) (NAICS 2007)	343	297	-11	286	57
Forest & Wood Products (NAICS 2007)	-5	-47	-1	-48	43
Arts, Entertainment, Recreation & Visitor Industries (NAICS 2007)	60	24	-5	19	41
Fabricated Metal Product Manufacturing (NAICS 2007)	-53	-74	-2	-76	23
Education & Knowledge Creation (NAICS 2007)	56	34	-1	33	23
Glass & Ceramics (NAICS 2007)	14	-7	0	-7	21
Manufacturing Supercluster (NAICS 2007)	-134	-151	-4	-155	21
Printing & Publishing (NAICS 2007)	-16	-26	-1	-27	11
Primary Metal Manufacturing (NAICS 2007)	7	-1	0	-1	8
Computer & Electronic Product Manufacturing (NAICS 2007)	-4	-4	0	-4	-1
Machinery Manufacturing (NAICS 2007)	-28	-24	-1	-25	-3
Transportation Equipment Manufacturing (NAICS 2007)	-21	-10	0	-10	-11
Electrical Equipment, Appliance & Component Manufacturing (NAICS 2007)	-34	-16	0	-16	-17
Apparel & Textiles (NAICS 2007)	-62	-33	-1	-34	-29
Mining (NAICS 2007)	-33	9	-1	8	-41
Agribusiness, Food Processing & Technology (NAICS 2007)	-59	4	-1	3	-63
Information Technology & Telecommunications (NAICS 2007)	-70	-2	-2	-4	-67

Cluster Name	Job Change	Ind Mix Effect	Nat Growth Effect	Expected Change	Competitive Effect
Business & Financial Services (NAICS 2007)	147	284	-9	275	-128
Defense & Security (NAICS 2007)	-104	30	-2	28	-133
Transportation & Logistics (NAICS 2007)	-236	-62	-6	-68	-169
Energy (Fossil & Renewable) (NAICS 2007)	769	1,062	-38	1,024	-255

Source: EMSI Complete Employment - 2013.2

Ranked By: 2007 Location Quotient



Cluster Name	2007 Jobs	2007 LQ	2012 LQ	Percent Change LQ
Energy (Fossil & Renewable) (NAICS 2007)	12,223	4.91	4.88	-1%
Mining (NAICS 2007)	416	2.29	2.10	-8%
Fabricated Metal Product Manufacturing (NAICS 2007)	731	1.29	1.36	5%
Transportation & Logistics (NAICS 2007)	1,842	0.92	0.84	-9%
Electrical Equipment, Appliance & Component Manufacturing (NAICS 2007)	129	0.81	0.70	-14%
Biomedical/Biotechnical (Life Sciences) (NAICS 2007)	3,600	0.79	0.81	3%
Machinery Manufacturing (NAICS 2007)	345	0.78	0.78	0%
Arts, Entertainment, Recreation & Visitor Industries (NAICS 2007)	1,696	0.67	0.70	4%
Manufacturing Supercluster (NAICS 2007)	1,316	0.54	0.56	4%
Apparel & Textiles (NAICS 2007)	221	0.39	0.34	-13%
Glass & Ceramics (NAICS 2007)	47	0.39	0.60	54%
Business & Financial Services (NAICS 2007)	2,797	0.38	0.37	-3%
Defense & Security (NAICS 2007)	685	0.37	0.31	-16%
Advanced Materials (NAICS 2007)	613	0.31	0.38	23%
Agribusiness, Food Processing & Technology (NAICS 2007)	282	0.30	0.24	-20%
Printing & Publishing (NAICS 2007)	346	0.29	0.30	3%
Chemicals & Chemical Based Products (NAICS 2007)	243	0.28	0.52	86%
Forest & Wood Products (NAICS 2007)	183	0.25	0.33	32%

Cluster Name	2007 Jobs	2007 LQ	2012 LQ	Percent Change LQ
Information Technology & Telecommunications (NAICS 2007)	500	0.22	0.19	-14%
Education & Knowledge Creation (NAICS 2007)	293	0.22	0.24	9%
Transportation Equipment Manufacturing (NAICS 2007)	71	0.11	0.09	-18%
Primary Metal Manufacturing (NAICS 2007)	12	0.07	0.13	86%
Computer & Electronic Product Manufacturing (NAICS 2007)	28	0.06	0.06	0%

Source: EMSI Complete Employment - 2013.2

Data Sources and Calculations

Industry Data

In order to capture a complete picture of industry employment, EMSI basically combines covered employment data from Quarterly Census of Employment and Wages (QCEW) produced by the Department of Labor with total employment data in Regional Economic Information System (REIS) published by the Bureau of Economic Analysis (BEA), augmented with County Business Patterns (CBP) and Nonemployer Statistics (NES) published by the U.S. Census Bureau. Projections are based on the latest available EMSI industry data, 15-year past local trends in each industry, growth rates in statewide and (where available) sub-state area industry projections published by individual state agencies, and (in part) growth rates in national projections from the Bureau of Labor Statistics.

Shift Share

Shift share is a standard regional analysis method that attempts to determine how much of regional job growth can be attributed to national trends and how much is due to unique regional factors.

Location Quotient

Location quotient (LQ) is a way of quantifying how concentrated a particular industry, cluster, occupation, or demographic group is in a region as compared to the nation. It can reveal what makes a particular region unique in comparison to the national average.