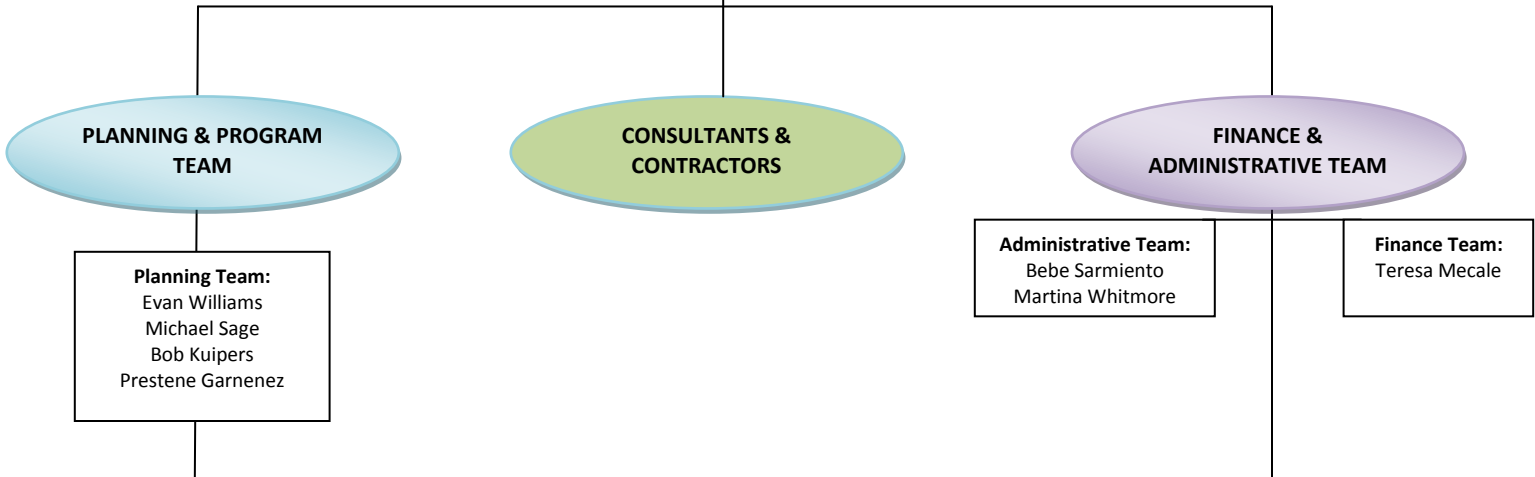


**COG MEMBERS, BOARDS, & COMMITTEES**

<p><u>MEMBER GOVERNMENTS</u></p> <ul style="list-style-type: none"> <li>Cibola County</li> <li>McKinley County</li> <li>San Juan County</li> <li>City of Gallup</li> <li>City of Grants</li> <li>Village of Milan</li> <li>City of Farmington</li> <li>City of Aztec</li> <li>City of Bloomfield</li> </ul> <p><u>AFFILIATES</u></p> <ul style="list-style-type: none"> <li>Northwest New Mexico Regional Solid</li> </ul>	<p><u>COG Executive Committee</u></p> <p><u>COG Budget Committee</u></p> <p><u>Comprehensive Economic Development Strategy (CEDS)</u></p> <ul style="list-style-type: none"> <li>CEDS Strategy Committee</li> <li>CEDS Partners Network</li> </ul> <p><u>REGIONAL PARTNERS</u></p> <ul style="list-style-type: none"> <li>The Enterprise Center/Quality Center</li> </ul>	<p><u>Northwest RPO Committee</u></p> <ul style="list-style-type: none"> <li>Pueblo of Acoma</li> <li>Pueblo of Laguna</li> <li>Pueblo of Zuni</li> <li>Navajo Nation</li> <li>City of Grants</li> <li>City of Gallup</li> <li>Village of Milan</li> <li>Cibola County</li> <li>McKinley County</li> <li>San Juan County</li> </ul>	<p><u>NAEDIS</u></p> <p>[Native American Economic Development Investment Strategy]</p> <ul style="list-style-type: none"> <li>Pueblo of Acoma</li> <li>Pueblo of Laguna</li> <li>Sheep Springs Navajo Chapter</li> <li>Baahalii Navajo Chapter</li> <li>Shiprock Navajo Agency RBDO</li> <li>Eastern Navajo Agency RBDO</li> </ul>
--	---	---	--

**Jeff Kiely**  
Executive Director



**\* ANNUAL WORK PROGRAM \***

**MEMBER SERVICES**

- CITY OF AZTEC
- CITY OF BLOOMFIELD
- CITY OF FARMINGTON
- CITY OF GALLUP
- CITY OF GRANTS
- VILLAGE OF MILAN
- CIBOLA COUNTY
- McKINLEY COUNTY
- SAN JUAN COUNTY

**BASE PROGRAMS**  
[Recurring Grants & Contracts]

<p><i>ECONOMIC DEV:</i> USDOC/EDA: CEDS Planning &amp; TA</p>	<p><i>BUSINESS FINANCE:</i> USDOC/EDA: ELF Revolving Loan Fund</p>
<p><i>TRANSPORTATION:</i> NMDOT: NWRPO Administration</p>	<p><i>GENERAL T.A.:</i> NMDFA/ Grant-in-Aid</p>
<p>LEGISLATIVE T.A.</p>	

**CENTER FOR REGIONAL INNOVATION**

<p><i>ENVIRONMENTAL PROTECTION:</i> USEPA: Brownfields Assessment Grant</p>	<p><i>Adventure Gallup &amp; Beyond, Inc.</i></p>
<p><i>USDOC/EDA: Native American Econ Dev Investment Strategy</i></p>	<p><i>Gallup Business Improvement District</i></p>
<p><i>CITY OF GALLUP: Navajo-Gallup Water Supply Project</i></p>	<p><i>Village of Milan: CDBG Subcontracts</i></p>
	<p><i>McKinley County Subcontracts: Energy Efficiency; IDC Rate</i></p>
	<p><i>CORPORATION FOR ENTERPRISE DEVELOPMENT Children's Savings Accounts Program</i></p>